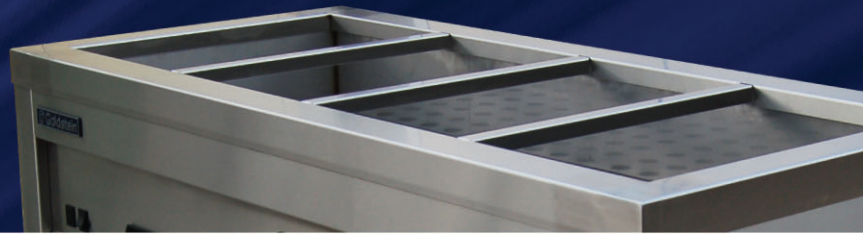




Goldstein
Established 1911 • Proudly Australian Made



SMARTSERVE BAIN MARIE SYSTEM

- Total application flexibility - stand alone or in-bench mount. Standard or custom - made tops.
- Takes standard 1/1 or 1/2 gastronorm pans up to 150mm deep (sold separately).
- All stainless steel construction.
- Semi - automatic fill & drain with ergonomic controls.
- Double skin insulated body for energy saving & safety.
- Digital temperature control (factory preset to 85°C) and display.
- Simple installation, plug & cord supplied (15 or 20 amp circuit required. See over).

MODELS

BASE	TOPS	
	STAND ALONE	BENCH MOUNT
SBM3	T3	BT3
SBM4	T4	BT4
SBM5	T5	BT5
SBM6	T6	BT6

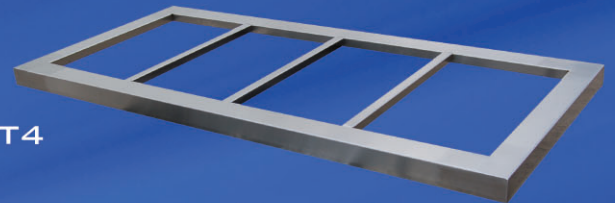
STEP 1: SELECT A BASE UNIT



SBM4

3, 4, 5 and 6 pan sizes available

STEP 2: SELECT A TOP



T4

Tops available to suit free standing, through bench mount, or fabricate your own special.

STEP 3: ADD OPTIONS



Trolleys (as shown), hot cupboard under, tray race, carving station, gantries, heat lamps and sneeze guards available.

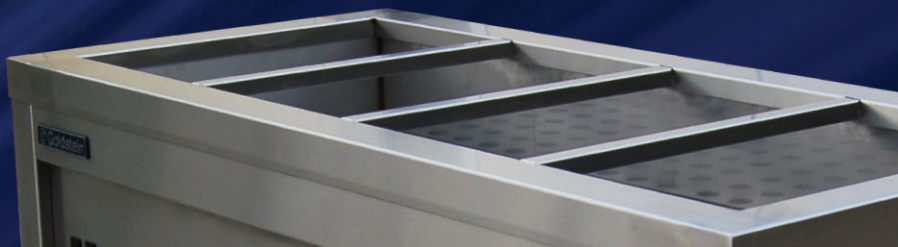


1800 013 123

goldsteineswood.com.au

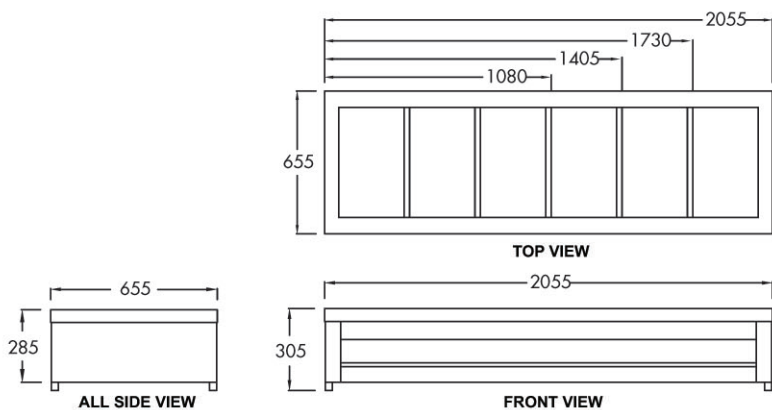


Goldstein
Established 1911 • Proudly Australian Made



SMARTSERVE BAIN MARIE SYSTEM

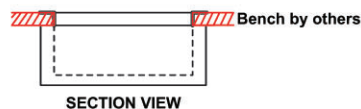
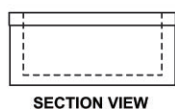
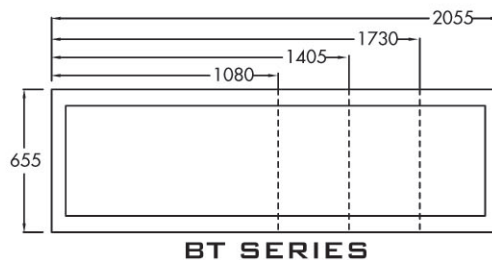
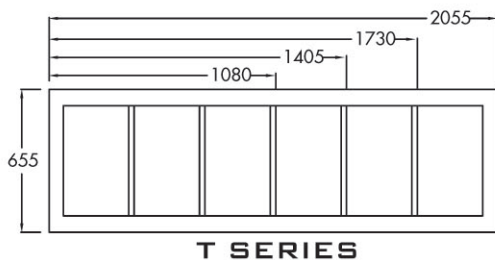
SBM3/4/5/6



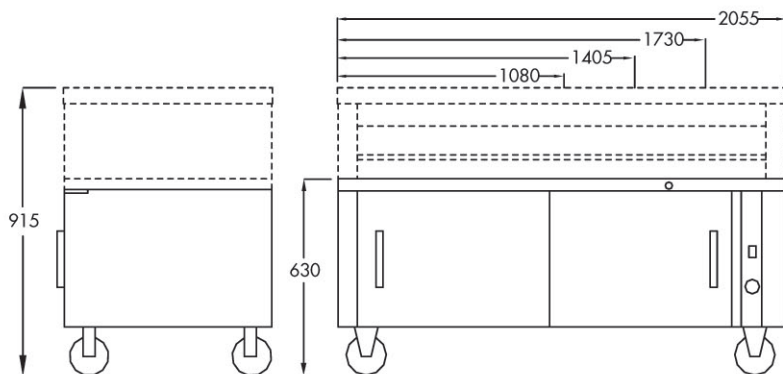
MODEL: SBM3/4/5/6 Specifications:

Dimensions (WxDxH): 1080/1405/1730/2055 x 655 x 285 mm
Working Height: 305 / 285 mm
Weight: 00 kg
Electric Connection: 15 amp plug 240V
Rating: 4 / 4.8 / 5.6 / 6.4 kw
Elements: Up to 6

TOPS



SHC3/4/5/6



MODEL: SHC3/4/5/6 Specifications:

Dimensions (WxDxH): 1080/1405/1730/2055 x 655 x 630 mm
Working Height: 915 mm (with SBM + T)
Weight: 227 kg
Electric Connection: 10 amp plug 240V
Rating: 2.4 kw

goldsteineswood.com.au

QEC2900 2 NOVEMBER 2008



GOLDSTEIN ESWOOD

Established 1911 • Proudly Australian Made

211-217 Woodpark Rd, Smithfield NSW 2164
 Telephone: 1800 013 123 Facsimile: (02) 9604 5420
 Email: sales@goldsteineswood.com.au

Proudly Distributed By

"Serving those who serve the best for 100 years"